

ISLEHAM WEEKLY NEWS

Week commencing: 16th January 2017



FIRE AND RESCUE SERVICE VISIT



Huge thanks are due to the crew of the Newmarket Fire Station who visited on Wednesday last week as part of the children's recent topic work in Reception and Year 1. The children thoroughly enjoyed finding out about the job of the fire fighters, and about the fire engine- especially sitting in the cab, and discovering how the water hoses and ladders work!

STAFF NEWS

Ms Sassoli and her husband are delighted to report that they are expecting their first child in late June 2017. We are obviously very pleased for them both, and also relieved that Ms Sassoli hopes to be able to see the Year 6 children through their SATs tests before starting her maternity leave at May half term! We will be wishing Ms Sassoli well towards the end of May when she looks to start her maternity leave, and meanwhile look forward to watching the baby bump grow! A supply teacher will be sought for the second half of the summer term 2017 in Year 6.

SPRING TERM 2017 CLUBS AND ADDITIONAL ACTIVITIES



Isleham Church of England Primary School
Malting Lane, Isleham, Ely, Cambridgeshire, CB7 5RZ
Telephone: 01638 780336
Email: office@isleham.cambs.sch.uk
www.isleham.cambs.sch.uk

Clubs continue this week- we cannot continue the **Recorder group** this term with current numbers, so do need some more children to return to Recorder Club this term if they have been learning before- Recorder Club runs on Tuesday lunchtimes. A beginners' group will run in the Summer Term.

Netball club is also short of players. **I have removed the £10 termly fee for this club on Wednesdays after school- we do need any further Year 5 and 6 children (boys and girls) who would like to play in the upcoming tournament to attend the club. Please let the office know if your child is willing to attend.**

BIRTHDAYS

HAPPY BIRTHDAY TO THE CHILDREN WHO CELEBRATE THEIR BIRTHDAYS THIS WEEK



MENU

Please see below the menu for the week ahead- children need to order Main Meal- Option 1, Vegetarian meal- Option 2 or the alternative dish- Option 3. Staff have a copy of the menu in class but it is very helpful if you can pre-agree with your child what they might like to pick to avoid confusion at register time! Thank you.

	Monday	Tuesday	Wednesday	Thursday	Friday
Mains	Award winning pork sausages with gravy and mashed potatoes	Cottage pie	Chicken pasta bake with garlic and herb focaccia	Roast pork, stuffing, apple sauce and gravy with roast potatoes	Battered cod fillet with tomato sauce and chips
	Quorn sausage with gravy and mashed potatoes ✓	Macaroni cheese and wholemeal bread ✓	Cheesy leek bake with garlic and herb focaccia ✓	Roasted pepper flan with roast potatoes ✓	Quorn dippers with BBQ sauce and chips ✓
	Salmon salad wrap	Jacket potato with baked beans ✓	Ham Ploughman's	Jacket potato with tuna and sweetcorn	Egg and cress on an open bun ✓
Desserts	Chocolate surprise cake and organic milk	Apple and banana crisp with custard	Wicked fruity Wednesday	Peach pudding with vanilla sauce	Mini chocolate oat biscuit and fruit
	Organic yogurt	Fruit and yogurt granola pot	Organic yogurt	Frozen yogurt	Organic yogurt

Option 1

Option 2

Option 3

Please note that on Thursday this week, we are holding our 'Count Me In' lunch- we have a changed menu for this Thursday to the options listed above, including 3 popular options for the children to choose from on this day and some exciting cupcakes and choc ice for pudding.

CHANGED MENU- THURSDAY 19.1.17

SPECIAL 'COUNT ME IN' LUNCH

Option 1: Roast Pork

Option 2: Vegetable nuggets

Option 3: Chicken nuggets

All served with roast potatoes and vegetables or salad from our salad bar

PLEASE encourage your child to have school lunch on Thursday if at all possible, as this date is our school census day and our school lunch funding can be increased according to the number of children having lunch. REMEMBER- ALL



Isleham Church of England Primary School
 Malting Lane, Isleham, Ely, Cambridgeshire, CB7 5RZ
 Telephone: 01638 780336
 Email: office@isleham.cambs.sch.uk
www.isleham.cambs.sch.uk

KEY STAGE 1 LUNCHES ARE COMPLETELY FREE TO PARENTS. KEY STAGE 2 CHILDREN ALSO ONLY PAY £2.25, IF NOT IN RECEIPT OF FREE SCHOOL MEALS.

500 WORDS NATIONAL COMPETITION

Teachers will go through the information about the 500 words national competition in school this week and are happy to upload your children's entries if you bring them in before half-term or just after half-term, but please spend time on this at home if you wish to enter...



Chris Evans is calling for all pupils to pick up their pens and get writing! Now in its 7th year, 500 Words is one of the most successful story-writing competitions for kids in the world. Its mission is to get children excited about reading and writing, regardless of their ability.

This competition aims to unleash the imagination, as your pupils write an original story on any subject or theme, in 500 words or fewer. It's that simple! Nearly **half a million** pupils have written a story for us; that's over **277 MILLION** words!

The winning wordsmiths will meet sensational celebrities – like Julie Walters, Tom Hiddleston and Andy Serkis – who will read their stories live on Radio 2 to 10 million listeners.

LOOK ONLINE FOR MORE INFORMATION

<http://www.bbc.co.uk/programmes/p00rfvk1>

The competition opens **Monday January 16th** and closes **February 23rd**.

VALUE OF THE WEEK

In our assemblies this week, we are thinking about our school value of 'Service' -helping out, assisting and aiding others and leading by example.

SERVICE



Matthew 20.26: The Son of Man did not come to be served but to serve and give his life as a ransom for many.

John 13.12-15: After Jesus had washed his disciples' feet ... he said: "Do you understand what I have done? And if your Lord and teacher has washed your feet, you should do the same for each other."



Isleham Church of England Primary School
Malting Lane, Isleham, Ely, Cambridgeshire, CB7 5RZ
Telephone: 01638 780336
Email: office@isleham.cambs.sch.uk
www.isleham.cambs.sch.uk

ISLEHAM'S CHEERLEADING CHAMPIONS

Lexi Clarke (from Year 2) and Evie Anderson & Poppy Downey (both from Year 4) are all members of Affinity 'Cheer and Dance'. They attended a cheerleading competition in Wales this weekend and did amazingly.

Lexi with her team 'Genesis' came first

Evie with her team 'Desire' came first and were grand champions

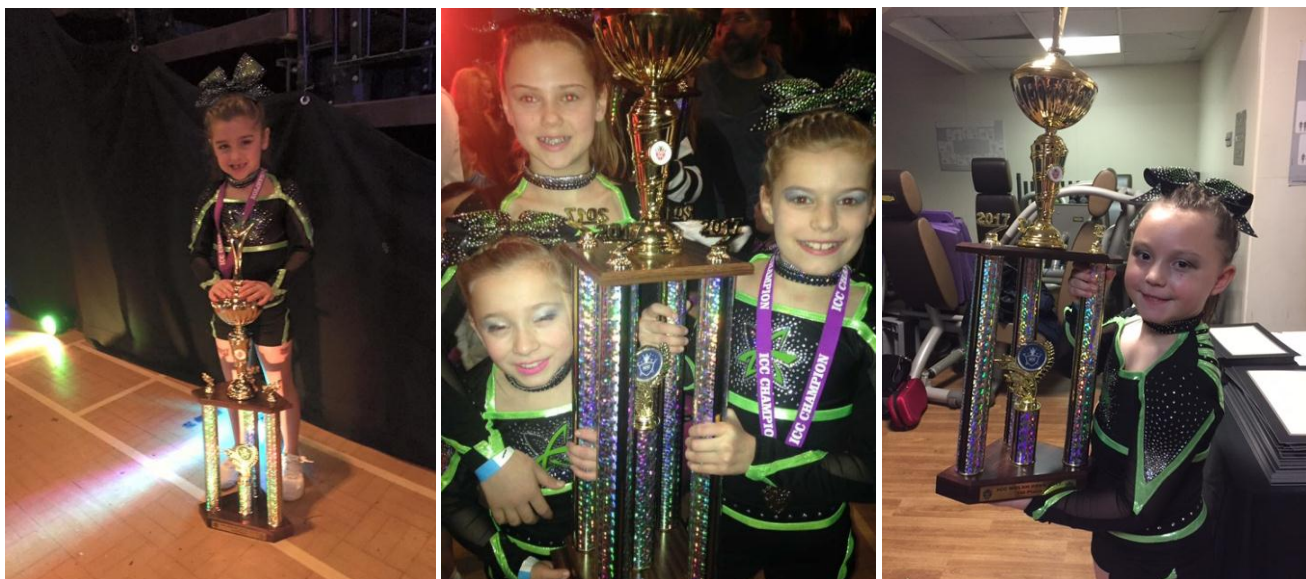
Evie with her team 'Fortune' came third

Evie also came first with her cheer duo

Poppy with her team 'Evolution' came first and were divisional champions

Poppy with her team 'Ignite' came second

All these teams also won a bid to the 'Battle of Champions' competition in 2018. Congratulations to all three girls.



COMMUNITY NEWS

QUIZ NIGHT IN AID OF SCHOOL PTA



The School PTA would like to thank all who attended the pub quiz held at the Rising Sun to raise funds for the PTA last Saturday evening. A huge thank you also to Claire & Pat Pearce for organising and hosting the event. £190 was raised for the PTA.



Isleham Church of England Primary School
Malting Lane, Isleham, Ely, Cambridgeshire, CB7 5RZ
Telephone: 01638 780336
Email: office@isleham.cambs.sch.uk
www.isleham.cambs.sch.uk



Parenting courses

Because children don't come with instructions

FREE

Parenting Taster Sessions

Understanding Challenging Behaviour
Parenting Styles
Effective Discipline

Soham Children's Centre 26th Jan & 23rd of Feb
Bottisham Children's Centre 7th & 21st of March

9am to 11am each session

All sessions are run by experienced trainers. Parenting sessions provide an opportunity for parents and carers to learn new skills that will help them and their children.

For more information or to book a place please contact Linda on 07786171619 or Tina on 07500953412

Run by the family workers who visit Isleham- Linda and Tina

www.cambridgeshirechildrenscentres.org.uk

Cambridgeshire County Council **SureStart**

FIT-TRITION FITNESS TRAINING FOR PARENTS!

Premier Education's Fit-Trition- the parent fitness session is to take place Tuesdays 9am-9.40am starting THIS WEEK!



Isleham Church of England Primary School
Malting Lane, Isleham, Ely, Cambridgeshire, CB7 5RZ
Telephone: 01638 780336
Email: office@isleham.cambs.sch.uk
www.isleham.cambs.sch.uk

2017 Pinpoint Conference

FOR CAMBRIDGESHIRE PARENT CARERS
of children with additional needs and disabilities

Friday January 27
Burgess Hall, St Ives
9.30am to 2pm



A DAY TO CELEBRATE YOU

Our annual conference is a day to celebrate parent power across Cambridgeshire and to recognise families across the county who care for children and young people with additional needs and disabilities.

- Hear fun, Inspiring speakers
- Salute our parent award winners
- Join in practical workshops to help you support your children and young people
- Get information & advice on services, support and products
- Meet local service managers
- Grab a 1:1 session with service commissioners
- Enjoy lunch and relaxation sessions
- Meet and chat to other parent carers and the Pinpoint team.

GREAT WORKSHOPS

- Think Autism
- Sleep
- Irwin Mitchell solicitors
- Stress busting
- SEN Support & Local Offer
- Family benefits
- Well-being

IT'S FREE: BOOK YOUR SEAT TODAY!

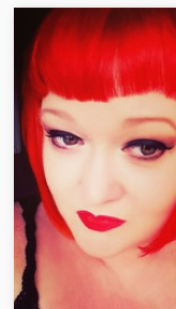
Register online via eventbrite: the short link is <http://bit.ly/2edsWDK>
Or call us on 01480 499043 or email bookings@pinpoint-cambs.org.uk

OUR VENUE

Burgess Hall Events & Conference Centre, next to One Leisure on Westwood Road PE27 6WU. It's a 10 minute-walk from St Ives Bus Station (on the guided busway); three miles from the A14 with free parking on site; and six miles from Huntingdon train station.

OUR SPECIAL GUEST

Star of Channel 4's hit show Gogglebox, and mum to two boys with additional needs: we welcome Cambridgeshire's Georgia McCormick. A champion of Tourette's and Autism, she's home-educated her youngest, and remortgaged twice to finance the legal fight for education. She's also partial to a large glass of wine and a pair of PJs. Come and find out more about her family, their journey and why they went public in front of 6m UK viewers.



DIARY DATES- TO HALF TERM

Friday 20th January- Year 1 Class Assembly 2.40pm

Week commencing 23rd January- 'Bikeability'- Year 5

Friday 27th January- 'Chinese New Year' discovery day in school

Wednesday 1st February- SATS information evening for parents of children in Year 2 and Year 6- 7.00pm

Friday 3rd February- Year 4 Class Assembly 2.40pm

Week of 6th February- NO CLUBS

Monday 6th February- Parents' Evening Appointments (1 of 2 dates)- 4.00pm-7.00pm

Tuesday 7th February- Parents' Evening Appointments (2 of 2 dates)- 3.30pm-5.30pm

Thursday 9th February- Valentines' Disco after school

Friday 10th February- NO SCHOOL- Professional Development Day for staff

Week of 13th February- NO SCHOOL- HALF TERM WEEK



Isleham Church of England Primary School
Malting Lane, Isleham, Ely, Cambridgeshire, CB7 5RZ
Telephone: 01638 780336
Email: office@isleham.cambs.sch.uk
www.isleham.cambs.sch.uk