

# ISLEHAM WEEKLY NEWS

Week commencing: Monday 25<sup>th</sup> June 2018



## JAY'S CHARITIES- SCHOOL FUNDRAISING EVENING

**THERE ARE A FEW TICKETS LEFT FOR THE FUNDRAISING PERFORMANCE OF 'ALADDIN TROUBLE' PERFORMED BY YEAR 5 & 6 ON TUESDAY 26<sup>TH</sup> JUNE AT 6PM.** Tickets are £2.50 each. Please try to book in advance so that we can have seating for everyone who wants to come along. A few tickets will be available on the door though- first-come, first-served!



## GRAND RAFFLE



There are some wonderful raffle prizes to be won as well...

- Chocolates
- Toys
- Bottles
- Family photography vouchers
- Vouchers for 'The Escape Rooms'
- Toiletries & candles

Tickets for the raffle are £1 a strip, and will be on sale throughout Tuesday during the day (via the office) and on the evening. The raffle will be drawn at the end of the show.

Programmes for the show will be available for a suggested donation of £1 each.

All proceeds from this event will go to supporting the family of Year 1 pupil Jay Davison in their quest to raise £10,000 to help fund alternative treatment and/or clinical trial expenses for Jay if needed. The family will be donating the funds to two worthwhile charities- The Brain Tumour Charity and Children with Cancer UK if they are not needed for Jay, which means your donations will definitely be used to support families and children battling cancer. If you are unable to get tickets to the show or to attend on that evening, but would like to donate to Jay's fundraising, please see the link below to the family's Just Giving page.

<https://www.justgiving.com/crowdfunding/jaysjourney2017>



Isleham Church of England Primary School  
Malting Lane, Isleham, Ely, Cambridgeshire, CB7 5RZ

Telephone: 01638 780336

Email: [office@isleham.cambs.sch.uk](mailto:office@isleham.cambs.sch.uk)

[www.isleham.cambs.sch.uk](http://www.isleham.cambs.sch.uk)

## SUN SAFETY

Please ensure your child has a sun hat in school throughout the coming week to wear at playtimes. He or she also needs a NAMED water bottle which can be regularly filled with fresh water throughout the day. Suncream should also be applied before school. **We will obviously also encourage the children to take regular breaks in the shade during this exceptionally hot weather.**



## SPORTS MORNING & SUMMER CELEBRATIONS

Don't forget these two important dates coming up in the school calendar which parents are invited to come along and support:-

**Sports morning on the 29<sup>th</sup> June at 9.30am (Reception & Key Stage 1) & 10.30am (Key Stage 2)**  
&  
**The Summer Concert & School Barbecue on the 5<sup>th</sup> July at 5.30pm. (All years)**



LAST YEAR, A PARENT MENTIONED THAT WE COULD BORROW **THEIR PA SYSTEM FOR THE SUMMER CONCERT-** DOES THIS OFFER STILL STAND? IF SO, PLEASE COULD YOU GET IN TOUCH WITH THE OFFICE SO THAT WE CAN ARRANGE?

ALSO, IF ANYONE CAN LEND US ANY POP-UP GAZEBOS or PARTY GAZEBOS FOR SPORTS DAY THIS FRIDAY, WE WOULD BE VERY GRATEFUL- THESE WOULD OFFER SOME WELCOME EXTRA SHADE FROM THE SUN WHILST WE ARE WATCHING THE KEY STAGE RACES AND HAVING OUR PICNICS

The Summer Concert on the 5<sup>th</sup> July will offer the perfect opportunity for the school to be together on the field in order to perform together and say farewell to **our leaving staff**. This is an opportunity for the children to present a special gift to each! All class groups will be performing songs. Please can ALL children aim to attend.

Please bring a fold-up chair to these events if you would like to sit down and/or a picnic blanket.

Please can I remind parents and family members attending events at the school that we try to have a common-sense approach to photographs and video in school at special events- we do try to enable parents to take photos or film focusing on their own child, but where these have other people's children in view, please DO NOT post the photographs on social media or share outside the school network without the express permission of all involved. Thank you.



Isleham Church of England Primary School  
Malting Lane, Isleham, Ely, Cambridgeshire, CB7 5RZ  
Telephone: 01638 780336  
Email: [office@isleham.cambs.sch.uk](mailto:office@isleham.cambs.sch.uk)  
[www.isleham.cambs.sch.uk](http://www.isleham.cambs.sch.uk)

## VALUE OF THE WEEK

In our assemblies this week and next, we are thinking about our school value of 'Truthfulness'.



## LOST PROPERTY

As you may have seen last week, we have a huge amount of lost property in school at present- NONE of the items are named. Please can all parents take time to write their child's name onto labels, sew or attach a name label. It is exhausting trying to give items back to their rightful owners when there are so many items unnamed. 😞

## FOOTWEAR FOR SCHOOL

There are still four full weeks of term-time left and some children have not had suitable PLAIN BLACK footwear for school for several weeks now. Please could all parents ensure their child has suitable school shoes from the start of next week?- I do understand that parents would not want to buy another pair of school shoes if their child's shoes ripped or broke in the final week of term, but with 4 weeks of term, children will still get good wear out of them before and after the holidays even if they are moving up to secondary school. There seems to be a growing trend amongst the children to wear brightly coloured trainers for school or trainers with flashes of colour- shoes for school should not be a distraction. Please support us in our desire to have only plain black shoes for school. THANK YOU.

## YEAR 6 LEAVERS' TEXTILE PROJECT

Year 6 we have been busy designing and creating their own textiles pieces. They have made beautiful scenes of our school as a wonderful memory keepsake. Lara Kinnett, who runs 'FashTex' classes for children who love fashion and textiles, showed Year 6 many techniques and organised all of the materials and resources that they needed. Thank you Mrs Kinnett for giving up two days of your valuable time to help us create a memory to last forever! Thank you also to Mrs Haggett for volunteering her time to help Year 6 too! Please check out more photos of Year 6 busy at work on the Year 6 page on the school website...



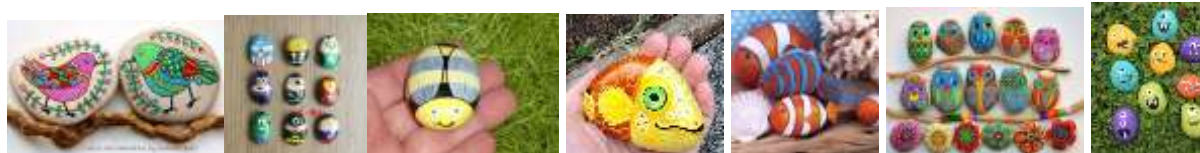
Isleham Church of England Primary School  
Malting Lane, Isleham, Ely, Cambridgeshire, CB7 5RZ  
Telephone: 01638 780336  
Email: [office@isleham.cambs.sch.uk](mailto:office@isleham.cambs.sch.uk)  
[www.isleham.cambs.sch.uk](http://www.isleham.cambs.sch.uk)

## ISLEHAM GALA DAY 2018

We have now selected the names from the hat for the children who will be this year's Isleham Gala King & Queen- They are **Finley & Bethany**. Congratulations to our two 'Royal' family members- they will be joining the other Reception class book characters on the school float in the procession on Saturday 7<sup>th</sup> July.



### 'PAINT A PEBBLE' GALA COMPETITION



We have extended the deadline for submission of entries for the 'paint-a-pebble' competition. If your child is able to paint a special '**Isleham gala**' pebble/ rock this year, your entries are invited by Friday 29th June. Please bring your rock/ pebble along to the office and ensure it is clearly labelled with your child's full name and year group. We need more entries to add to our lovely display! You can choose any favourite theme for your pebbles. There will be some lovely prizes provided by the Gala Committee for the winners.

### BIRTHDAYS

Many happy returns of the day to children who are celebrating birthdays this week



### SPORTS MORNING 2018 THIS WEEK

Please bring a chair so you can enjoy watching the races in comfort, and please wear your trainers or suitable footwear for the parents' races which will take place just before each of the Key Stage presentation ceremonies!

#### Key Stage 1 & Reception

9.30am-10.00am- Key Stage 1 & races in year groups

10.00am- 10.20am- Children assemble in centre rectangle- House team event, Parents' races & Presentation ceremony

10.30am- Key Stage 1 all go inside for break & tracks cleared for Key Stage 2 races

#### Key Stage 2

10.30am- Key Stage 2 races on year group tracks

11.15am-11.35am- Children assemble in centre rectangle- Parents' races/ Class tug-of-war & Presentation ceremony

11.45am- Key Stage 2 all go inside for cool down and to collect lunches.

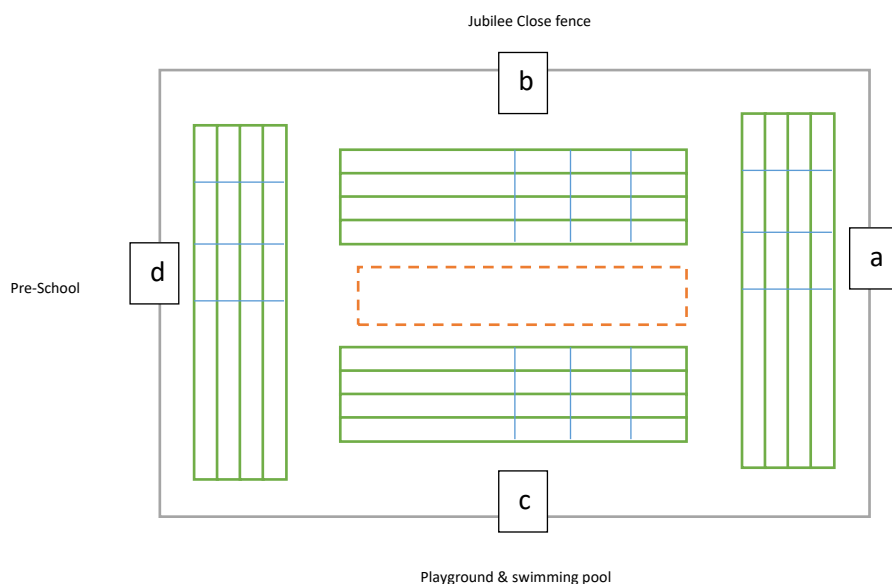
12.00pm- all children to field for picnic lunch with parents (Please note that there will be NO hot school lunches on Friday this week- all children taking a school meal must order a 'grab& go' option 3 lunch on Sports Day- sausage under wraps or cheese roll for vegetarians)



Isleham Church of England Primary School  
Malting Lane, Isleham, Ely, Cambridgeshire, CB7 5RZ  
Telephone: 01638 780336  
Email: [office@isleham.cambs.sch.uk](mailto:office@isleham.cambs.sch.uk)  
[www.isleham.cambs.sch.uk](http://www.isleham.cambs.sch.uk)



## Track layout



Spectators should please sit/ stand outside the perimeter line near the fence closest to their child's track. Then, for the presentation ceremonies, spectators are welcome to move to sit/ stand on track b.

Key Stage 1	Key Stage 2
Track a-Year R	Track a-Year 3
Track b-Year 1	Track b-Year 4
Track c-Year 2	Track c-Year 5
	Track d-Year 6

## HANDWRITING AWARDS



The recipients of the weekly Handwriting award last week were:-

Week commencing:-	Reception	Year 1	Year 2	Year 3
18 <sup>th</sup> June 2018	Jimmy	Bethany	Henry T	George

Well done to all four children for their super handwriting efforts.

## MENU THIS WEEK


JOIN US FOR OUR SPECIAL WORLD CUP FOOTBALL LUNCH ON THURSDAY THIS WEEK



Isleham Church of England Primary School  
 Malting Lane, Isleham, Ely, Cambridgeshire, CB7 5RZ  
 Telephone: 01638 780336  
 Email: [office@isleham.cambs.sch.uk](mailto:office@isleham.cambs.sch.uk)  
[www.isleham.cambs.sch.uk](http://www.isleham.cambs.sch.uk)

This week's menu options are listed below:-



Week 1	MONDAY	TUESDAY	WEDNESDAY	THURSDAY	FRIDAY
OPTION 1	Quorn meatball sub 🍷	Golden fish fingers with chips	Barbecue Bar Beef burger in a bap with potato salad	Roast chicken, stuffing and gravy with crispy roast potatoes or mashed potatoes	Sports morning and picnic lunch on field  'Grab & go' lunches only  
OPTION 2	Margarita pizza 🍷	Crispy veggie fingers with chips 🍷	Hot dog with potato salad 🍷	Veggie tartlet with crispy roast potatoes or mashed potatoes 🍷	
OPTION 3	'Grab & go' lunch bags- see options below				
SIDES	Garden peas Rainbow salad	Garden peas Baked beans	Corn on the cob Summer coleslaw	Carrots Green beans	
DESSERTS	Brownie with ice cream Fresh fruit slices	Lemon poppy seed muffin with milk Fresh yoghurt Fresh fruit slices Cheese and crackers	Yoghurt cheesecake Fresh fruit slices	World Cup Football Shirt cookie or Rice Krispie Football ⚽	

Option 3 is the 'grab & go' packed lunch bag- There will be one option per day for the 'grab & go' bag as listed below with the exception of days when the offered option contains a meat product, when vegetarian pupils can opt for a cheese roll.

Monday	Tuesday	Wednesday	Thursday	Friday
Cheese roll	Ham roll	Egg mayo roll	Tuna roll	Sausage under wraps
Carrot & cucumber	Carrot & cucumber	Carrot & cucumber	Carrot & cucumber	Carrot & cucumber
Fruit	Fruit	Fruit	Fruit	Fruit
Brownie	Lemon Muffin	Cheese & biscuits	Ginger biscuit	Flapjack

## SUMMER TERM DATES FOR YOUR DIARY

Monday 25<sup>th</sup> June- 1.45pm- Year 5/6 Production dress rehearsal  
 Tuesday 26<sup>th</sup> June- 1.45pm- Year 5/6 Production 1 of 2 (2 tickets per family in Year 5 & 6 allocated)  
 Tuesday 26<sup>th</sup> June- 6.00pm- Year 5/6 Production 'Aladdin Trouble'- Charity Fundraiser performance (Tickets £2.50 per person available from the office- first-come, first-served!)  
 Wednesday 27<sup>th</sup> June- 6.00pm- Year 5/6 Production 2 of 2 (2 tickets per family in Year 5 & 6 allocated)  
 Friday 29<sup>th</sup> June- Sports morning (Key Stage 1 & Reception- 9.30am, Key Stage 2- 10.30am Picnic lunch for families 12pm-1pm)  
 Wednesday 4<sup>th</sup> July – SVC Y6 Transition Day & Move-up day at Isleham (children to spend day in new classes for September 2018)  
 Thursday 5<sup>th</sup> July- Cambridgeshire Primary Schools' Netball Final in Chatteris (selected pupils) 12.30pm-4.30pm  
 Thursday 5<sup>th</sup> July- Summer Concert **5.30pm** & PTA Barbecue  
 Saturday 7<sup>th</sup> July- Isleham Gala Day- School float in procession from 12.30pm- Bands in The Beeches hall from 3.05pm  
 Monday 9<sup>th</sup>- Wednesday 11<sup>th</sup> July- Year 6 Residential visit to the Horstead Centre  
 Monday 9<sup>th</sup> July- Art Workshop for Year 5 pupils at MCA  
 Thursday 12<sup>th</sup> July- PTA AGM at 3.30pm- ALL PARENTS WELCOME. We will be forming the committee for the coming year.  
 Friday 13<sup>th</sup> July – Y6 Rounders Tournament / PTA Leavers' Disco  
 Monday 16<sup>th</sup> July- Sports morning (if 29.6.18 cancelled)  
 Wednesday 18<sup>th</sup> July- Summer Concert (if 5.7.18 cancelled)  
 Friday 20<sup>th</sup> July (9.30am)- Year 6 Leavers' assembly & final service of the year in the School Hall- Year 6 parents welcome to attend



Isleham Church of England Primary School  
 Malting Lane, Isleham, Ely, Cambridgeshire, CB7 5RZ  
 Telephone: 01638 780336  
 Email: [office@isleham.cambs.sch.uk](mailto:office@isleham.cambs.sch.uk)  
[www.isleham.cambs.sch.uk](http://www.isleham.cambs.sch.uk)