

# ISLEHAM WEEKLY NEWS

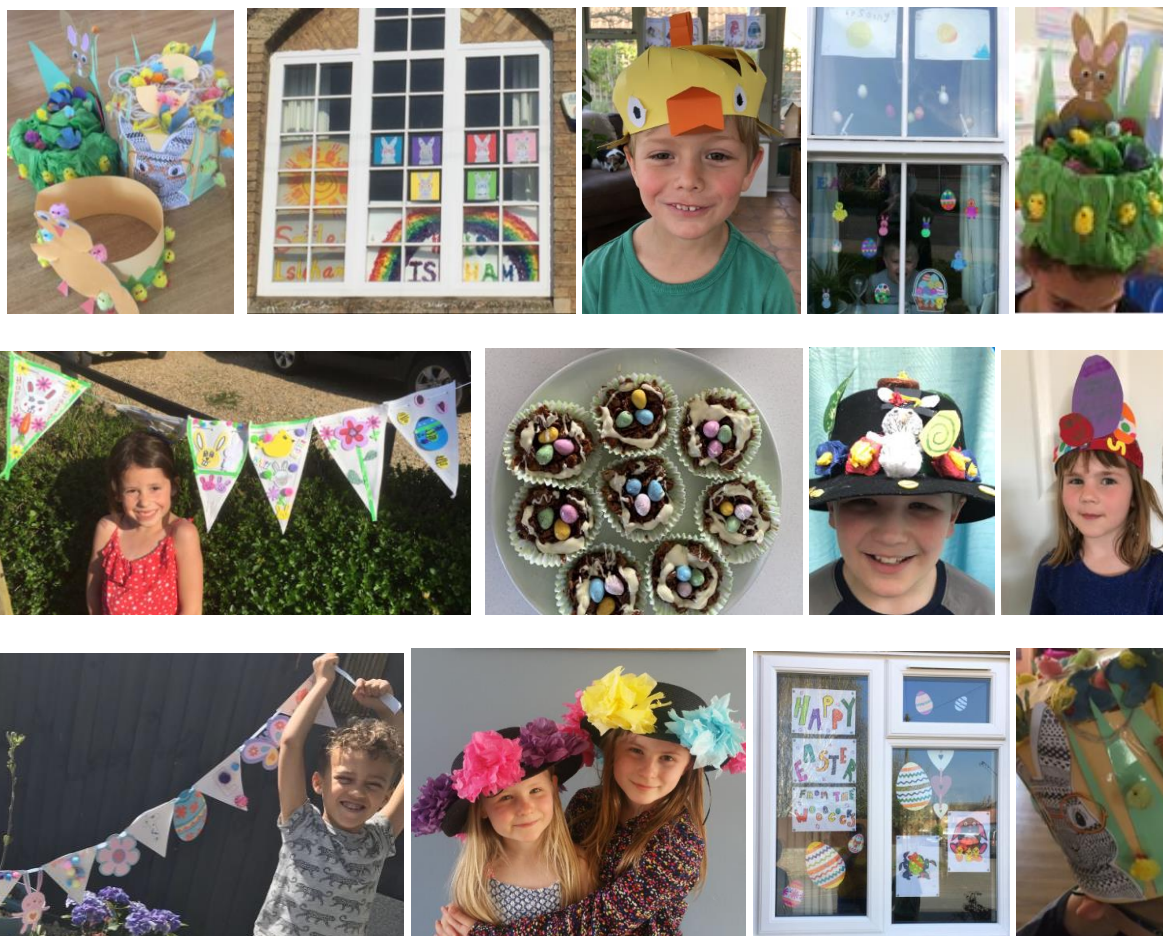
Tuesday 14<sup>th</sup> April 2020



## LATEST SCHOOL NEWS

Dear Parents,

We hope you and your children are keeping well. We are now entering the fourth week since our temporary school closure and the second week of what would have been the Easter break... Thank you to all of you who have created Easter bonnets, cakes and displays and sent in photos over the past week.



Remember your children can share any photos of things they have done at home by using Clasdojo and uploading a photo using the + sign in their activity folder (portfolio).

The staff are really enjoying seeing your children's work and photos via Clasdojo. Please email [head@isleham.cambs.sch.uk](mailto:head@isleham.cambs.sch.uk) if you would like more information about how your children can use the site.

Next Monday the 20<sup>th</sup> April, we will recommence our posting of year group activities for your children to carry out throughout the week at home if you wish them to.



Isleham Church of England Primary School  
Malting Lane, Isleham, Ely, Cambridgeshire, CB7 5RZ  
Telephone: 01638 780336  
Email: [office@isleham.cambs.sch.uk](mailto:office@isleham.cambs.sch.uk)  
[www.isleham.cambs.sch.uk](http://www.isleham.cambs.sch.uk)

There will be 3 English, 3 Maths and 1 Topic activity for the week ahead. Please feel free to do some or all and send your work and photos in for comments from the teacher.

Many thanks. With best wishes for the week ahead,  
Mrs Skillern

### **SAYING FAREWELL TO YEAR 3 PUPIL JAY DAVISON**

Thank you so much to all who have attached ribbons to the fence to remember Jay Davison. It has been really heart-warming to see so many of you coming along to the school to share your messages for Jay's family and the ribbons look so bright and jolly blowing in the wind.

The Davisons have advised that there will be a private funeral for Jay on Friday 17<sup>th</sup> April this week in Isleham. Only close family members will be able to attend due to the current Covid-19 restrictions.

However, the family would love to see any well-wishers on their way to the cemetery (observing social distancing, of course- we will mark out some zones outside the school which are at least 2m apart). They will be walking along Malting Lane past the school at 10.45am. Please note that if you are driving to Malting Lane, please park near The Beeches, rather than blocking the road outside the school.

Please remember that if you are making a paper flower for Jay's family in advance of the funeral, these need to be with the family tomorrow (Wednesday 15<sup>th</sup>). Please see Mrs Davison's facebook post below.



### **Post from Jay's Journey Facebook:**

So as you all know coronavirus has stopped every day life. We had lots of ideas of how we wanted Jay's funeral to be before all of the restrictions with the recurring theme of colourful.

Jay has inspired us and so many others with his outlook on life. Looking for the rainbow in every storm and we want to commemorate that when we say goodbye.

This is where you come in. We would love it if Jay's story has touched you in anyway to make a paper flower, if your kids/grandkids went to school with Jay we would love them to make a flower we would love everyone to make a flower.

Our plan is to cut his name out of cardboard and then cover it in a rainbow of flowers to travel with him as we go to say our goodbyes. If you'd like to attach a note to it so we know who the flower is from that would be lovely.

I will leave a box out the front of our house for flowers to be left in if you are local. If you want to post one our address is 35 mill street, isleham, ely. Cambs. CB75RY.

We need all the flowers by Wednesday 15<sup>th</sup> of April please.

There are loads of different designs on google. Please don't make them enormous (ideally 10 cms maximum)

Keily x

#TeamJay



Isleham Church of England Primary School  
Malting Lane, Isleham, Ely, Cambridgeshire, CB7 5RZ  
Telephone: 01638 780336  
Email: [office@isleham.cambs.sch.uk](mailto:office@isleham.cambs.sch.uk)  
[www.isleham.cambs.sch.uk](http://www.isleham.cambs.sch.uk)