

ISLEHAM WEEKLY NEWS

Week commencing: Wednesday 5th January 2022

THE SPRING TERM HAS SPRUNG! – ADVICE FOR THE TERM AHEAD



As you will be fully aware, Covid-19 cases have been on the rise in the local area throughout the past month. During these unpredictable times, we will continue to work with the Public Health teams and Cambridgeshire County Council to do everything we can to maintain continuity of education for your children even if they or their teachers are required to isolate, and to mitigate risks wherever possible to offer a safe school environment for all of our school community.

What's new for this term?

Whilst we ascertain what the local situation with regard to Covid-19 will be this month, we will be reintroducing some additional safety measures to reduce the risk of transmission of the virus between children within the school buildings:-

- A reduced number of after-school clubs will operate indoors this half term to ensure that only one class group attends each club at this time. We will write to individual classes who can be offered after-school clubs this term and each class teacher will also offer colouring and activities during a lunchtime club for the children.



- Assemblies and lessons for mixed classes will not take place- virtual or outdoor meetings will be set up instead



Isleham Church of England Primary School
Malting Lane, Isleham, Ely, Cambridgeshire,
CB7 5RZ

Telephone: 01638 780336

Email: office@isleham.cambs.sch.uk

www.isleham.cambs.sch.uk

- Events for parents and meetings/ visits for non-essential visitors will be held virtually until further notice



- **FACE MASKS ARE BACK!** Parents are encouraged to wear a face mask whilst on the school site



**PLEASE WEAR
A MASK OR A
FACE COVERING
WHILE ON
THESE
PREMISES.**

Which measures are ongoing?

- If your child is required to isolate but is well enough to carry out school work at home, he or she will be provided with up to 4 hours of school work per day to support his or her learning. Please log in to our ClassDojo learning platform. Your child may borrow a school iPad to complete home learning tasks if he or she does not have access to a PC or iPad which can be used throughout the school day during their absence



ClassDojo



- Children will continue to be encouraged to wash their hands regularly, and touchpoints and equipment will be regularly sanitized. Children may use the school provided sanitizers and soaps or bring in their own in named plastic container/ bottle



Isleham Church of England Primary School
Malting Lane, Isleham, Ely, Cambridgeshire,
CB7 5RZ

Telephone: 01638 780336

Email: office@isleham.cambs.sch.uk

www.isleham.cambs.sch.uk

- Staff and adults will wear masks in communal areas when not eating or drinking, and maintain social distance whenever possible. Children may also wear a mask on the journey to or from school, or within the classroom/ communal areas as long as they are confident to put these on and take them off independently and store them safely in a pocket or bag when not in use.



- Please **DO NOT** attend school or enter the school site if you or your child are experiencing any symptoms of COVID-19. Contact the school and follow the advice offered by the NHS teams.

NO SCHOOL IF...



- The office will continue to be open for essential visits only- please email or telephone with any queries: office@isleham.cambs.sch.uk or 01638 780336, or speak to a member of staff on the gate



- Children can be delivered to the supervised playground from 8.45am daily and enter classrooms between 8.50am and 9.00am. Registers close and lessons commence promptly at 9.00am. Please park safely



- Children can be collected from the Reception playground or main between 3.15pm and 3.20pm daily. Year 1 to 6 parents- please make your way to the collection areas shown on the map below and leave the school site promptly. Please respect others' space and maintain social distance.

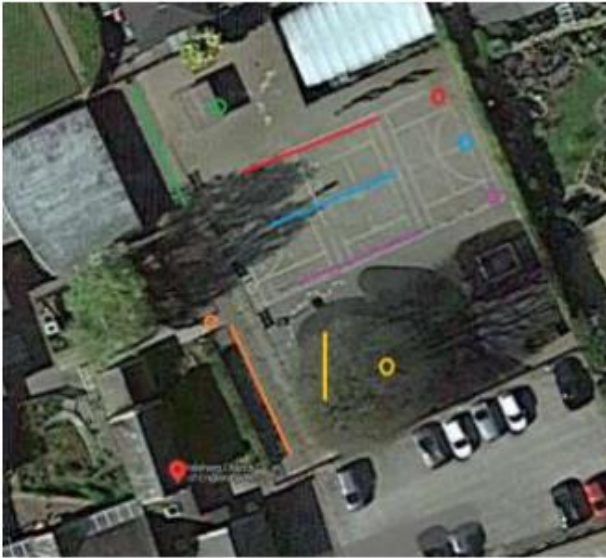


Isleham Church of England Primary School
Malting Lane, Isleham, Ely, Cambridgeshire,
CB7 5RZ

Telephone: 01638 780336

Email: office@isleham.cambs.sch.uk

www.isleham.cambs.sch.uk



- Key:-**
- orange circle- Year 1 children waiting
orange line- Year 1 parents waiting
 - green circle- Year 2 children waiting
green line- Year 2 parents waiting
 - red circle- Year 3 children waiting
red line- Year 3 parents waiting
 - blue circle- Year 4 children waiting
blue line- Year 4 parents waiting
 - purple circle- Year 5 children waiting
purple line- Year 5 parents waiting
 - yellow circle- Year 6 children waiting
yellow line- Year 6 parents waiting

In addition to all these measures, the school will continue to be thoroughly cleaned and well ventilated throughout the school day.

We will continue to review the safety measures in place throughout January and let you know when advice or routines change.

We are looking forward to welcoming parents back into school and reinstating our planned class cafés and assemblies as soon as possible.

Please see the latest Cambridgeshire advice sheet for parents overleaf indicating how to manage a suspected or confirmed case of COVID-19 in a child- we hope you won't need this of course though!

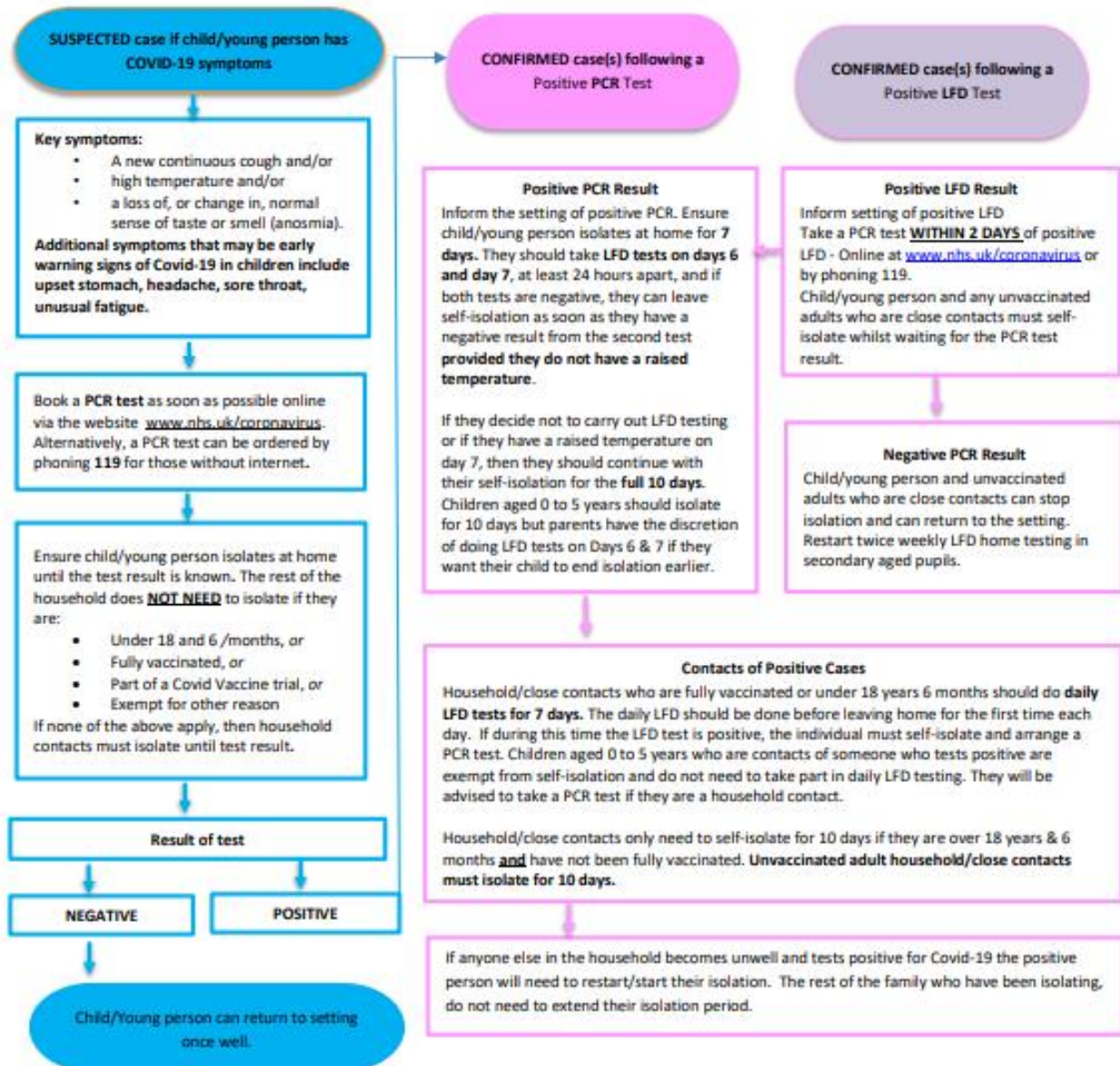
With all best wishes for the term ahead,

Mrs Skillern and the Isleham Primary staff team



Isleham Church of England Primary School
Malting Lane, Isleham, Ely, Cambridgeshire,
CB7 5RZ
Telephone: 01638 780336
Email: office@isleham.cambs.sch.uk
www.isleham.cambs.sch.uk

For any **SUSPECTED** or **CONFIRMED** case of COVID-19 in a child/young person please follow the flow chart below



- With the emergence of the highly transmissible Omicron Variant, we continue to ask families/children to wash hands regularly, keep spaces well ventilated, wear face coverings (if aged 11 and over) in crowded public indoor areas, maintain distance, get vaccinated and take LFD tests prior to meeting people outside your household.
- Face coverings are to be worn by everyone over the age of 11yrs unless exempt on transport to and from educational settings.
- LFD test = Lateral Flow Device tests are rapid tests that can be used at home and the result is available within 30 minutes.
- PCR test = polymerase chain reaction test that can be booked online and is sent to a lab for the result.
- If you have previously received a positive Covid-19 PCR test result within the last 90 days and you are identified as a contact of someone with Covid-19 you should not take a PCR test. You should only take a PCR test if you develop any NEW symptoms of Covid-19 or if you have a positive LFD test result, or if you are required to take a PCR test upon entry into the UK.
- LFD tests are used for identifying Covid-19 infection where there are no symptoms. If you have symptoms always book a PCR test.
- LFD tests are safe to use in pregnancy. They are not recommended for children under 5 years of age but can be used at parent/guardian discretion.
- If you have had a Covid-19 vaccination you should still take part in the LFD testing as you may still transmit the virus.
- If you have had a recent nosebleed, or have a nose piercing, use the other nostril to swab for the LFD test. Always follow the instructions on the pack as there are different types of LFD tests.



CHRISTMAS 2021- THANK YOU FOR YOUR SUPPORT

We were incredibly proud of the Reception, Year 1 and Year 2 children for their hard work in performing their nativity plays in December. Well done to all of you!



Thank you too to all who supported our Christmas jumper day by wearing festive attire, and to all who bought raffle tickets for the teddy and bottle tombolas, raising £200 for the school PTA.



Isleham Church of England Primary School
Malting Lane, Isleham, Ely, Cambridgeshire,
CB7 5RZ

Telephone: 01638 780336

Email: office@isleham.cambs.sch.uk

www.isleham.cambs.sch.uk