

# ISLEHAM WEEKLY NEWS

Week commencing: Monday 31st January 2022

## YEAR 1 SPACE ADVENTURES



Our Year 1 children have been busy in the past couple of weeks, working across the curriculum. Well done Year 1.

## NEW UNIFORM ORDERING SYSTEM ONLINE

Just a reminder that in order to improve the efficiency of our uniform ordering process, we are moving to an online system for all main garments from after half term which can be accessed from the following link:

<https://gooddies.co.uk/product-category/schools/isleham-c-of-e-v-c-primary-school/>

We still have a large amount of stock immediately available at school up until half term at slightly lower prices so if you do wish to collect quickly, please submit your order form to the office and pay online in the current usual way- thank you.

## COVID-19- LATEST UPDATE FOR 31.1.22

We will continue to provide daily numbers of COVID-cases impacting our attendance data over the next couple of weeks. Please keep supporting up by doing what you have been doing... Parental & school measures to date have ensured that numbers are reduced compared to many local settings, and we're pleased to now have most children back in school again. Thank you.



Isleham Church of England Primary School  
Malting Lane, Isleham, Ely, Cambridgeshire,  
CB7 5RZ

Telephone: 01638 780336

Email: [office@isleham.cambs.sch.uk](mailto:office@isleham.cambs.sch.uk)

[www.isleham.cambs.sch.uk](http://www.isleham.cambs.sch.uk)

## PARENTS' EVENING APPOINTMENTS AFTER HALF TERM



Our Parents' evening discussions with teachers will take place on the 22<sup>nd</sup> February 2022 between 4pm and 7.30pm, and on 3<sup>rd</sup> March 2022 between 4pm and 7.30pm.

We will send through booking details next week so that you can begin to book a convenient time for your parent-teacher meeting on one of those days.

This term, we will be trialling an online video call system called School Cloud Parents' Evening. This is used successfully in many local schools and will hopefully be a popular and easy way to access a video call link with the teachers for your 10 minute appointment time.

Thank you.

### LOGO LIFT OFF COMPETITION BY THE UK SPACE AGENCY

Your children are encouraged to design a logo that could go on the first rockets ever to be launched from the UK... These rockets will carry small satellites into orbit that collect information that can be used to protect our planet from climate change.

Children can enter from home or school, but are welcome to bring their designs into school so we can help them with the entry form and send the entries off together at half term to the UK Space Agency.

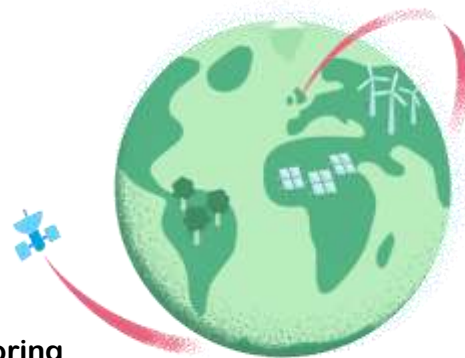
You can find details of the competition here:

<https://www.logoliftoff.org.uk/>

And watch a video about it here:-

<https://www.youtube.com/watch?v=wugP0SYtVuk>

Please bring any entries along to the office by Wednesday 9<sup>th</sup> February and mark for the attention of Mrs Skillern. Remember that designs need to somehow include a link to the idea of monitoring climate change on our planet. HAPPY DESIGNING EVERYONE!



### SCHOOL HOLIDAY DATES

Our half term holiday begins after school on Friday 11<sup>th</sup> February and children return to school on Monday 21<sup>st</sup> February 2022.

Easter holidays begin after school on Friday 1<sup>st</sup> April, and children return to school on Wednesday 20<sup>th</sup> April 2022



Isleham Church of England Primary School  
Malting Lane, Isleham, Ely, Cambridgeshire,  
CB7 5RZ

Telephone: 01638 780336

Email: [office@isleham.cambs.sch.uk](mailto:office@isleham.cambs.sch.uk)

[www.isleham.cambs.sch.uk](http://www.isleham.cambs.sch.uk)