

# ISLEHAM WEEKLY NEWS

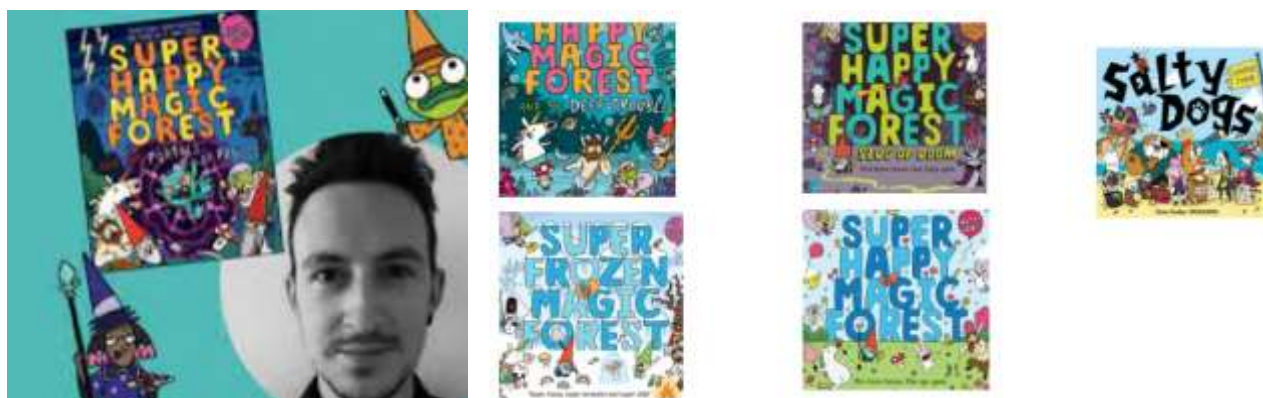


Week commencing: Monday 28<sup>th</sup> February 2022

**THIS WEDNESDAY, DON'T FORGET WORLD BOOK DAY- WEDNESDAY 2<sup>ND</sup> MARCH AT ISLEHAM PRIMARY**



We can't wait to welcome author **Matty Long** to school this Wednesday for our **WORLD BOOK DAY**.



If you pre-ordered a copy of one of **Matty Long's** books through the school, they will be waiting for you in school on the day. If you already have a book written by **Matty Long** you would like to have signed, don't forget to bring it in.

All children are invited to dress up as a favourite book character, or bring along their favourite book to recommend to others. There will be prizes of book tokens for the most innovative costumes.

## HULA- HOOPING WEEK

This week is hula-hooping week in school- we're looking forward to more of your children sharing their talents, as during our assembly on Friday, we found out that the children already have many hula hooping ideas and skills- one Year 4 child is challenging us to beat his 7-minute non-stop hula hooping record! We'll let you see in next week's newsletter what we have all achieved. Feel free to have a go at home too!



Isleham Church of England Primary School  
Malting Lane, Isleham, Ely, Cambridgeshire,  
CB7 5RZ

Telephone: 01638 780336

Email: [office@isleham.cambs.sch.uk](mailto:office@isleham.cambs.sch.uk)

[www.isleham.cambs.sch.uk](http://www.isleham.cambs.sch.uk)

## RECEPTION CLASS EVENTS

In Literacy this week, the class listened to the traditional tale 'Little Red Riding Hood'.

Many of the children already knew the story but only a few were able to recall the familiar language e.g. 'oh Grandma, what big eyes you have'.

They enjoyed retelling the story using props and figures in the small world tuff spot.

Children explored a selection of objects and practised sounding them out before placing them in Little Red Riding Hood's basket.

This helped to prepare them for writing labels for objects and sentences later in the week.



In maths this week, the class revisited 'time'. We read the story 'What's the time Mr Wolf' and enjoyed playing the game after.

Children learned how to tell the time on the clocks to the hour which they demonstrated in their independent play.



play.



# Reception Class

Last week in our 'Into the Woods' topic we themed our learning around the story

The class were challenged to create a basket of their own using only 2 pieces of A4 paper, sellotape and glue. This was really informative as children learned to adapt their designs to make them better.

## 'Little Red Riding Hood'

This weeks learning will focus on the story 'The Foggy, Foggy Forest' (Nick Sharratt).



We still hope to get our Woodland Wednesday Visits up and running this term as the topic lends itself perfectly to so many woodland activities. Thank you to your continued support with this.



Little Red Riding Hood



Isleham Church of England Primary School  
Malting Lane, Isleham, Ely, Cambridgeshire,  
CB7 5RZ

Telephone: 01638 780336  
Email: [office@isleham.cambs.sch.uk](mailto:office@isleham.cambs.sch.uk)  
[www.isleham.cambs.sch.uk](http://www.isleham.cambs.sch.uk)

## PTA FUNDRAISERS

### Easy ways to help the PTA raise funds for the school – The Cooperative Community Fund and Amazon Smile

Isleham School PTA were again successful at being selected by The Cooperative as a Community Fund recipient this year. If you shop in The Co-op, at any store, you can become a Co-op member and nominate the PTA as the local cause you wish to receive funds. If you are already a member you should receive an email and you can choose your fund with one simple click! Remember you need to scan or swipe your card every time you shop! For every £1 members spend on selected Co-op branded products and services, 2p will go into their membership account.

Our cause profile page is: <https://membership.coop.co.uk/causes/60815>

If you aren't yet a member of The Co-op you can sign up at: <https://www.coop.co.uk/membership>

Isleham School PTA also has an AmazonSmile account. Amazon Smile is a website operated by Amazon. It features the same products at the same prices as the standard Amazon site. The only difference is, when you shop on Amazon Smile, the Amazon Smile Foundation will donate 0.5% of the cost of all eligible products to the PTA.

The PTA get a small amount of income each few months from Amazon Smile, but it would be brilliant to increase the amount. So please place your Amazon orders via Smile and boost our income.

Isleham School PTA AmazonSmile: [smile.amazon.co.uk/ch/1109379-0](https://smile.amazon.co.uk/ch/1109379-0)

## PTA SCHOOL DISCOS



Timings:-

Friday 18<sup>th</sup> March

5.15pm-6.15pm- RECEPTION & KEY STAGE 1  
£2.50 entry

6.30pm-7.45pm- KEY STAGE 2 £2.50 entry

The PTA School Discos will be taking place on Friday 18<sup>th</sup> March- Red Nose Day... There will be one event for Reception and Key Stage 1 at 5.15pm, and one for Key Stage 2 at 6.30pm.

The PTA are asking for DBS- checked parent volunteers to help supervise the children at the discos and tidy up after each event. If you would like to help, please email [islehampta@gmail.com](mailto:islehampta@gmail.com). We will need up to 3 helpers from each year group.

For the Reception and Key Stage 1 event, please consider carefully whether your child will wish to take part in the disco. Children will be in the hall and need to get involved in the games and dances whether or not you are in attendance- if they do not like busy spaces, or loud noises, it may be



Isleham Church of England Primary School  
Malting Lane, Isleham, Ely, Cambridgeshire,  
CB7 5RZ

Telephone: 01638 780336

Email: [office@isleham.cambs.sch.uk](mailto:office@isleham.cambs.sch.uk)  
[www.isleham.cambs.sch.uk](http://www.isleham.cambs.sch.uk)

best to avoid this event. It is not compulsory to attend, and it does not make sense for us to be trying to provide a quiet creche for those who don't like discos.

The cost of attending is £2.50 per child payable on the door. Please bring a named water bottle so that you can keep well hydrated. We will have squash or water available for filling water bottles.

**TROY STORY YEAR 3 AND 4 PARENTS TICKET BOOKING- 23.3.22 and 24.3.22 at 1.30pm**



Year 3 and 4 will be performing their Spring production 'Troy Story' to parents on the afternoons of Wednesday 23<sup>rd</sup> March and Thursday 24<sup>th</sup> March at 1.30pm.

Please click on the link below to book your 2 family tickets for your preference of date and an e-ticket will be sent to your email address.

<https://www.surveymonkey.co.uk/r/MB77YTC>



Please note that Year 3 are the chorus for this show and do not have main parts (they will of course when in Year 4) and therefore seating allocated will be to the chorus audience seats for Year 3 parents.



Isleham Church of England Primary School  
Malting Lane, Isleham, Ely, Cambridgeshire,  
CB7 5RZ

Telephone: 01638 780336

Email: [office@isleham.cambs.sch.uk](mailto:office@isleham.cambs.sch.uk)

[www.isleham.cambs.sch.uk](http://www.isleham.cambs.sch.uk)

## **TERM DATES THIS TERM**

**Monday 28<sup>th</sup> February- Year 5 Pony Days Week 1- Fence painting pm**

**Tuesday 1<sup>st</sup> March- Fence painting pm**

**Wednesday 2<sup>nd</sup> March- World Book Day dress-up if you can!**

**Wednesday 9<sup>th</sup> March- KS2 girls' football tournament- details to follow**

**Week of 14<sup>th</sup> March- Year 5 Pony Days week 2- Science Week**

**Friday 18<sup>th</sup> March- Red Nose Day- cake sale for Comic Relief- feel free to wear red and bring a donation for a cake (suggested donation £2 per child)**

**School discos after school- Reception & KS1- 5.15pm-6.15pm, KS2 6.30pm-7.45pm**

**Week of 21<sup>st</sup> March- Year 5 Pony Days week 3**

**Wednesday 23<sup>rd</sup> March- 1.30pm Year 3 & 4 production 'Troy Story' in school hall- pre-booked ticket holders only**

**Thursday 24<sup>th</sup> March- 1.30pm Year 3 & 4 production 'Troy Story' in school hall- pre-booked ticket holder only**

**Sunday 27<sup>th</sup> March- Mothering Sunday**

**Friday 1<sup>st</sup> April- 2pm Isleham's Got Talent, Easter holidays start after school**

**Wednesday 20<sup>th</sup> April- Children return to school after the Easter holidays**

## **SCHOOL CLOUD PARENTS EVENING SESSIONS**



Apart from one or two glitches with internet or phone connectivity, the SchoolCloud Parents' Evenings seemed to be effective in enabling teaching staff to catch up with each parent last week. When parents' evenings are in the school hall, staff members tend to see significantly less parents than was achieved with this format. Please take time to fill out the survey attached if you would like to give your views about this system. Your comments will help us to develop our parents' evenings in future. Thank you

<https://www.surveymonkey.co.uk/r/3L9LV52>



Isleham Church of England Primary School  
Malting Lane, Isleham, Ely, Cambridgeshire,  
CB7 5RZ

Telephone: 01638 780336

Email: [office@isleham.cambs.sch.uk](mailto:office@isleham.cambs.sch.uk)

[www.isleham.cambs.sch.uk](http://www.isleham.cambs.sch.uk)